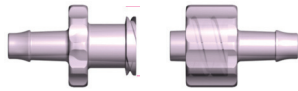


**OVERVIEW**

In order to get the best results from your applications, it is good to understand what options are available within our Luer fittings. Please note, Luers are not intended to interface with any of our quick couplings.

**LUER TAPER BASICS**



Luer Taper fittings are made by a number of different manufacturers. When selecting a Luer, it is important to balance the product's quality with its price to ensure you are not over paying. Both price and quality start in the initial design of the product and continues to the final products features. Our Luer Fittings have the following features:

- Single Barb design
- Smooth Gate
- Smooth Nurlers
- Smooth Bore Fluid Path
- Medical Grade Materials
- Manufactured in the USA

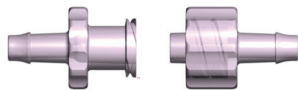
**APPLICATIONS**



Ideal applications for Luers include:

- IV Lines
- Wound Drainage
- Catheters
- Temperature Management
- Air lines
- Lab chemicals
- Ink Dispensing
- And many other applications

**SMOOTH BORE FLUID PATH**

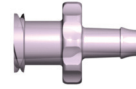


Our Luer fittings are designed with a smooth fluid path. This design feature has a number of benefits including:

- Less surfaces for liquid and particulates to cling to
- More laminar flow
- Medical instruments can more easily pass through the product without snagging

**TUBE BARBS**

**SIZES**

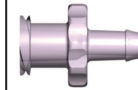


- 1/16" ID
- 3/32" ID
- 1/18" ID
- 5/32" ID
- 3/16" ID

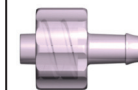
**BODY OPTIONS**

**IMAGE**

Female



Male

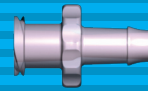


**MORE OPTIONS**



[KentSystems.com/Luer\\_Fittings\\_QR.php](http://KentSystems.com/Luer_Fittings_QR.php)

Discover more about KENT Systems Luer Fittings online. Simply scan this QR Code to be directed to the Luer section of our website. *Data charges may apply. See your cell phone provider for details.*



**Overview Specifications**

TEST	SPECIFICATION
Pressure Rating	-10 PSI thru 25 PSI
Temperature Rating	-50°F thru 100°F
Connection Cycles Body	100 connections (before product should be replaced)

*Specifications for products with Nylon, Acetal, Stainless Steel, Buna-N, materials*

**Flow Rates**

BARB SIZE	FEMALE	MALE
1/16"	0.4 GPM	0.4 GPM
3/32"	0.5 GPM	0.5 GPM
1/8"	1.25 GPM	1.25 GPM
5/32"	1.8 GPM	1.8 GPM
3/16"	2.5 GPM	2.5 GPM

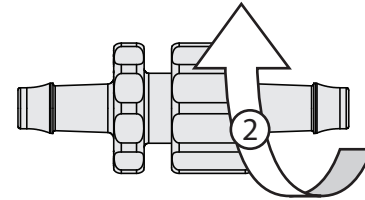
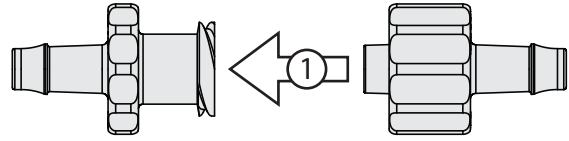
*Tested with water, 60°F, 10PSI. Individual results may vary*

**Tubing Sizes**

TUBE ID	BARB OD	BORE ID	TUBE ID RANGE
1/16" (1.5 mm)	.102"	.060"	.063" - .078"
3/32" (2.25 mm)	.129"	.076"	.078" - .109"
1/8" (3.0 mm)	.164"	.096"	.094" - .141"
5/32" (4.0 mm)	.208"	.122"	.125" - .188"
3/16" (4.75 mm)	.264"	.155"	.156" - .234"

*Note: Tubing can vary greatly in size and tolerance. Tube clamps should not be necessary if using quality tubing at reasonable pressures.*

**SIMPLE TWIST TURN DESIGN**



**Single Barb Design**

- No parting line helps prevent leak paths
- Does not require bonding adhesive
- Does not require tube clamp

**Smooth Gates**

- Lower Costs
- Reduces vestige which can tear medical gloves

**Smooth Nurlers**

- Easy to grip and tighten connection
- Reduces sharp edges which can tear medical gloves

**Medical Grade Materials**

- Class VI Polypropylene
- Polycarbonate
- Nylon

